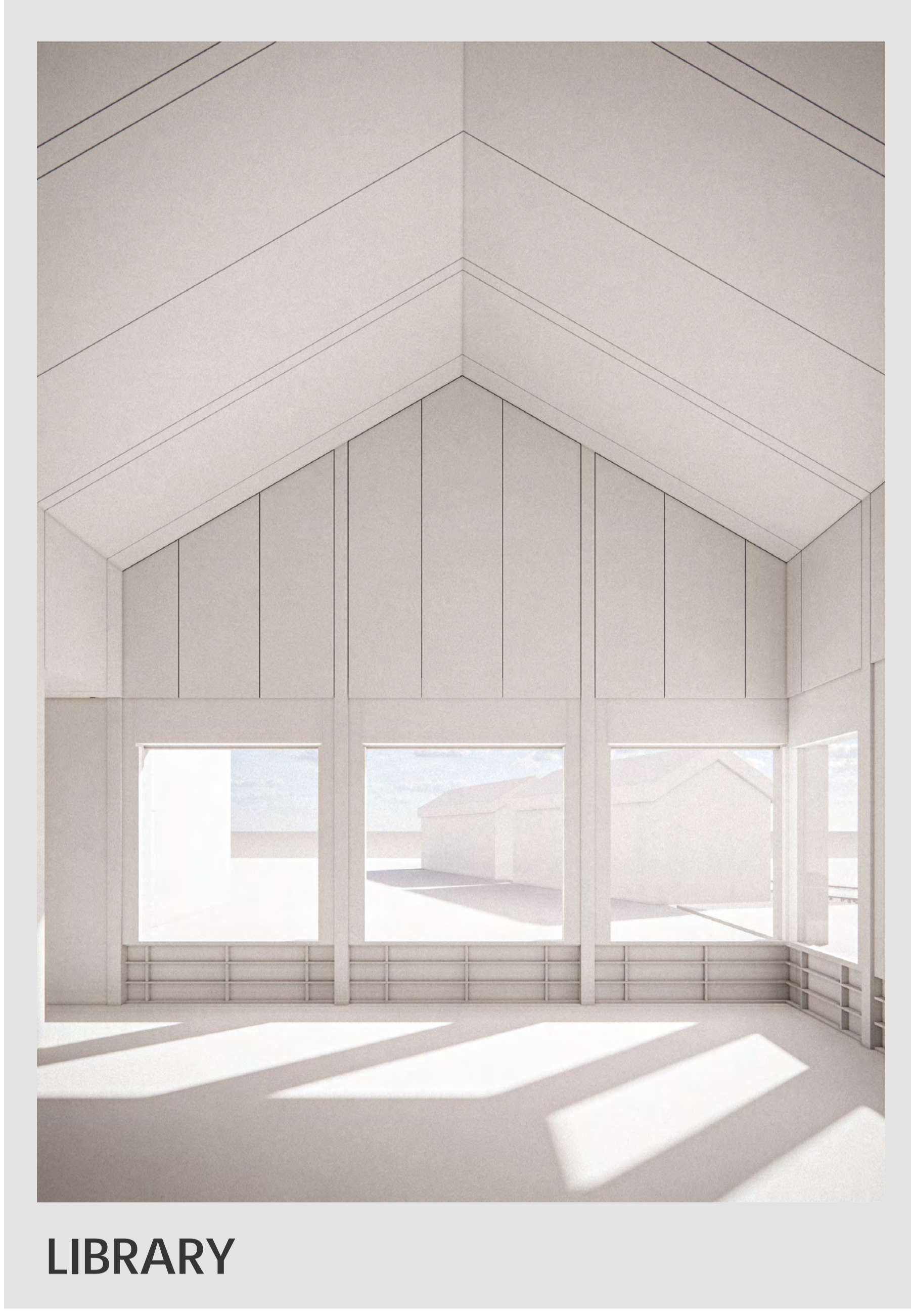
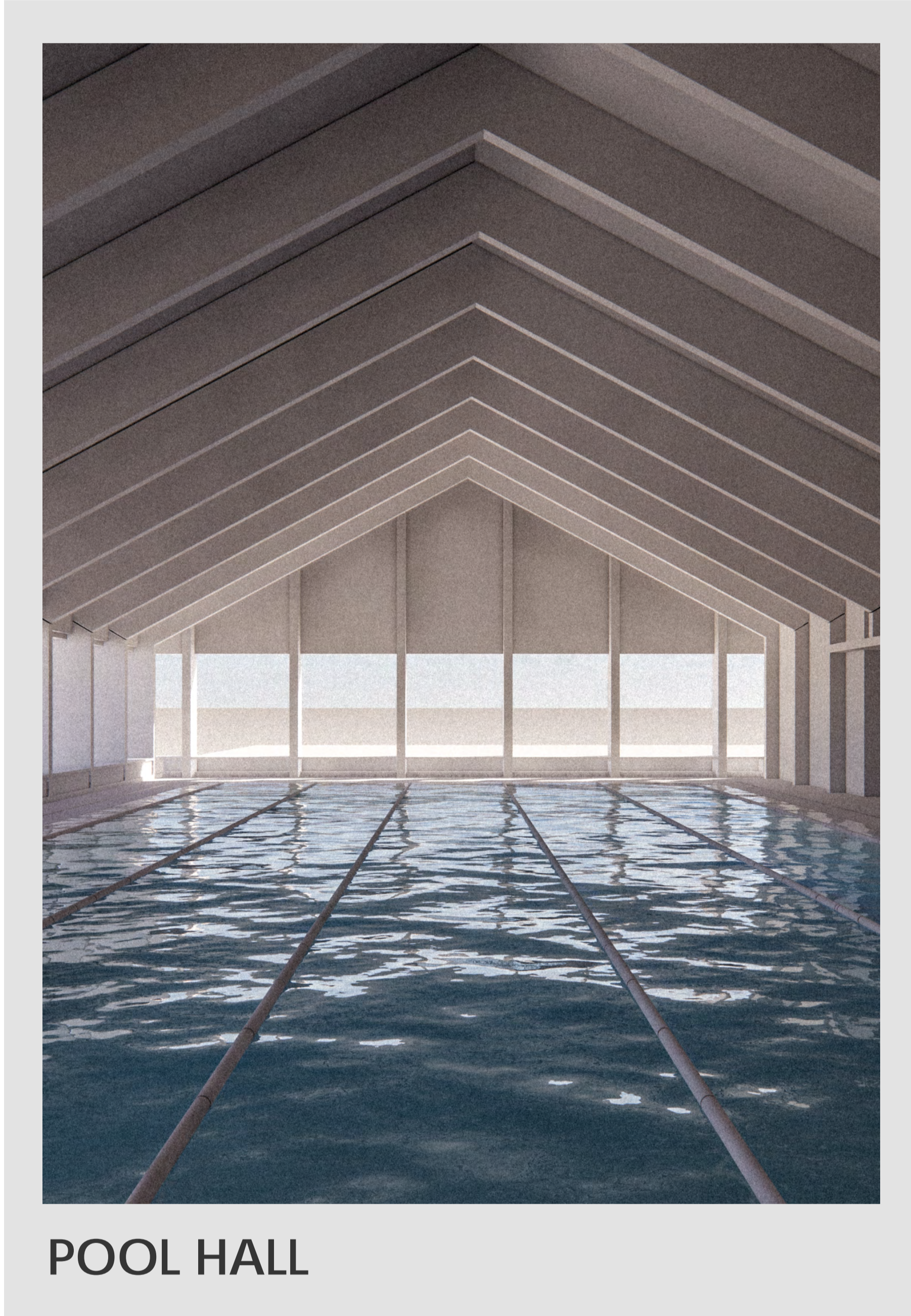
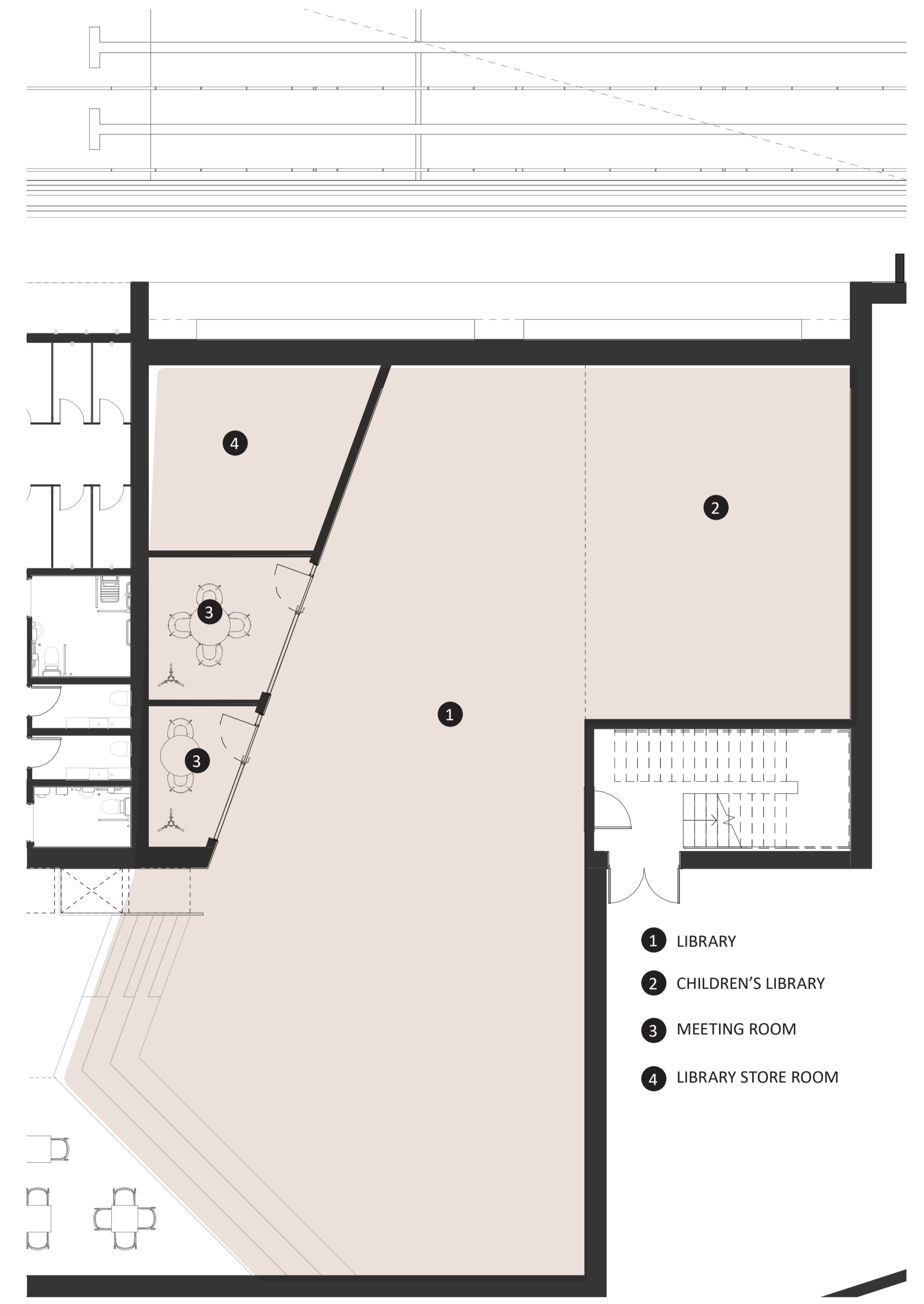


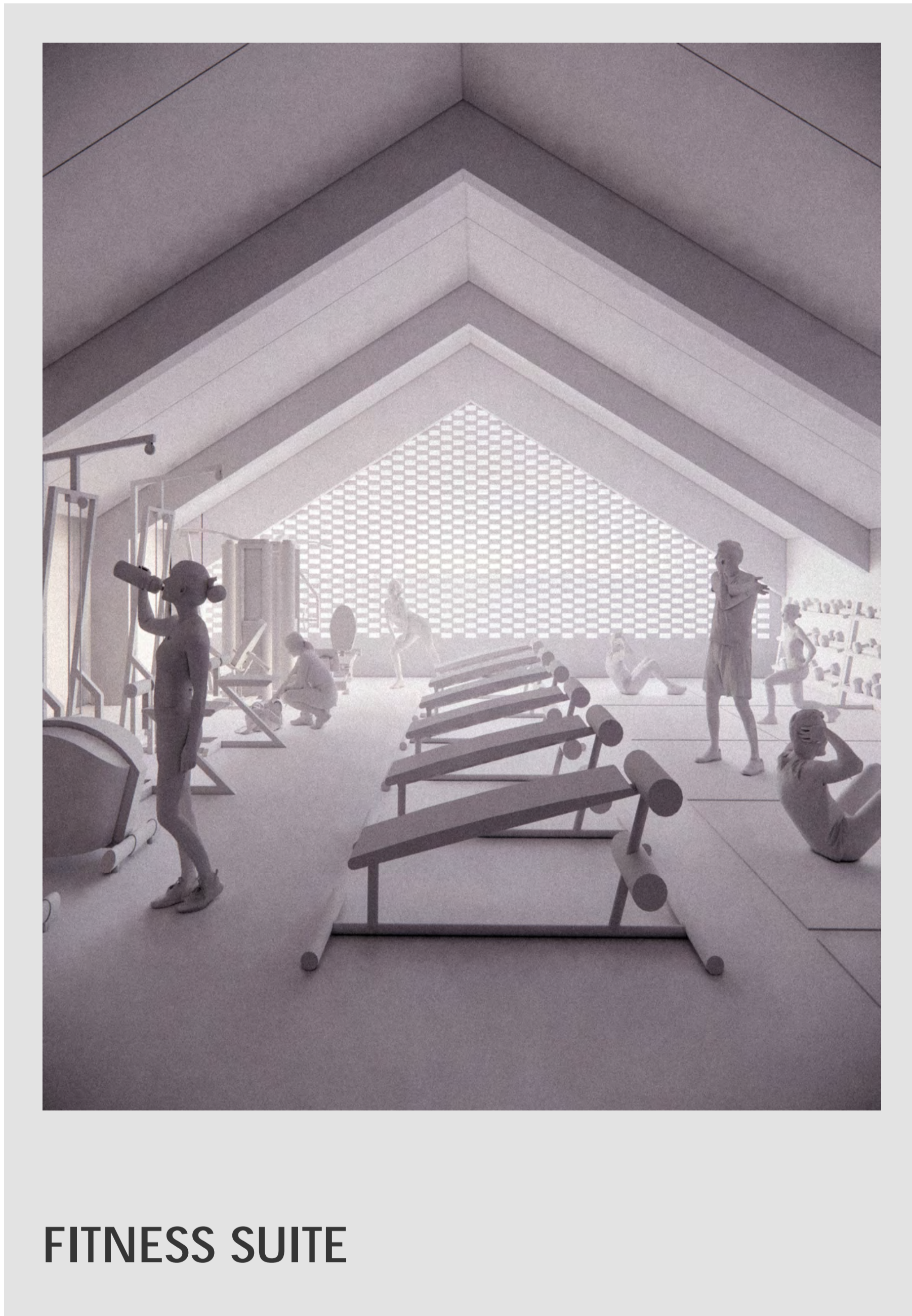
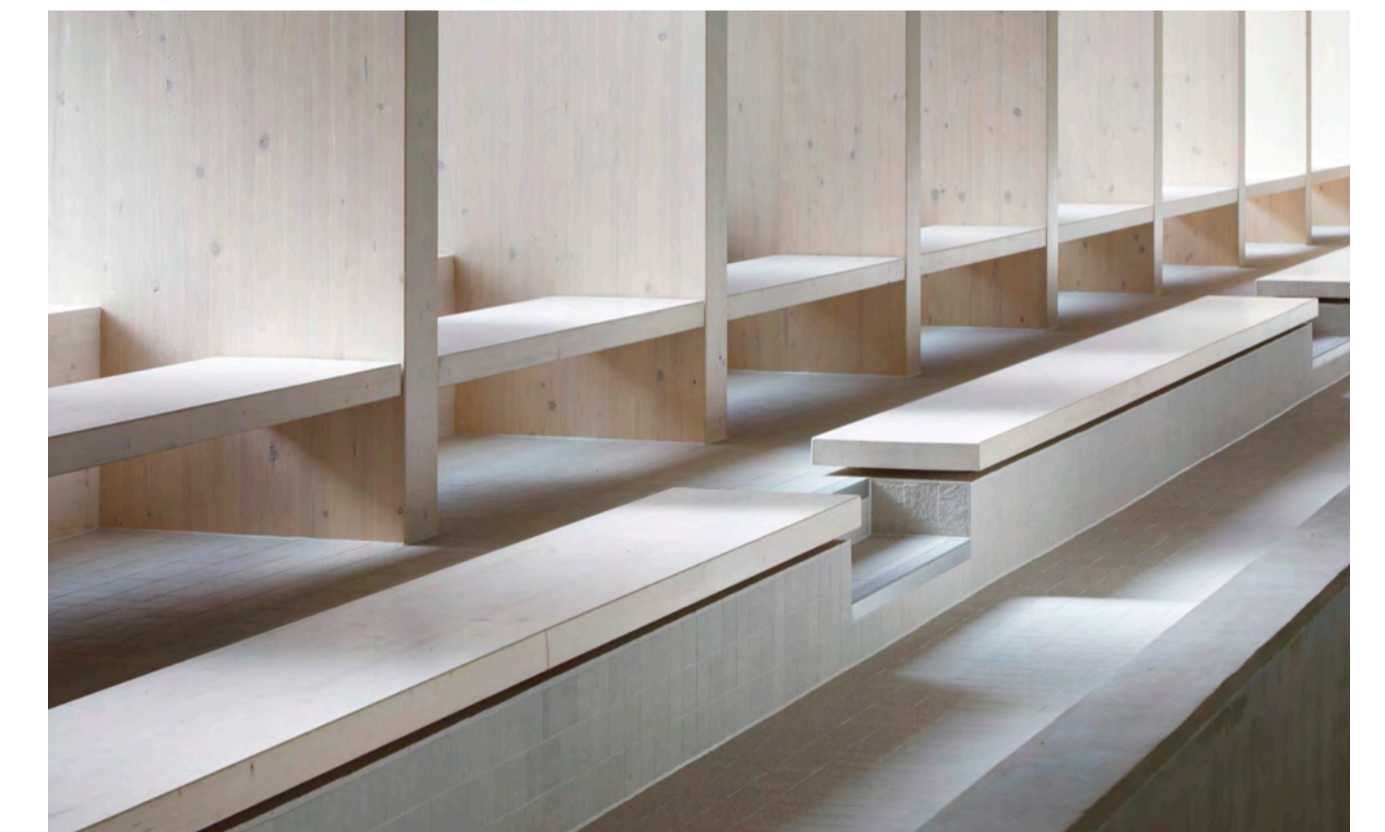
## INTERNAL SPACES



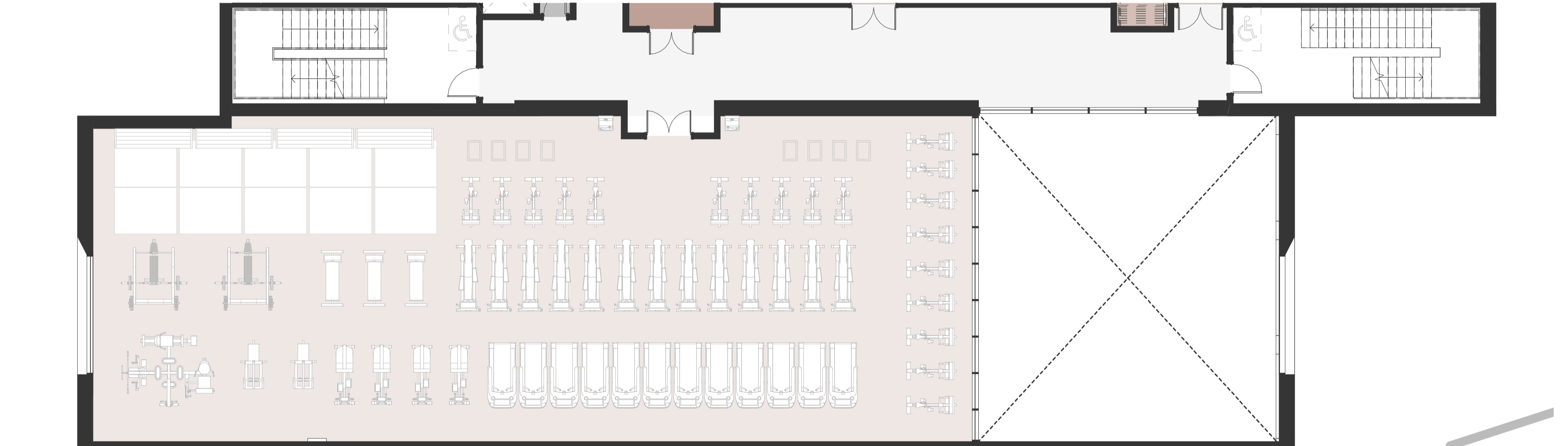
LIBRARY



POOL HALL



FITNESS SUITE



## NEXT STEPS

Following the engagement exercise, the design team will go away and consider the feedback received and make changes to the proposed scheme where possible. A summary of the engagement exercise and how feedback has been incorporated into the proposed scheme will be provided in the form of a Statement of Community

Involvement which will be publicly accessible via the Council's online planning register.

We will also now be undertaking further technical surveys to assist us in finalising the proposed development before we submit a planning application early in 2024.

### FEEDBACK

Thank you for taking the time to attend the public engagement today. We appreciate your participation and for sharing your views on the proposals with us.

The council would like to hear your feedback on the scheme which can be provided using the feedback

form provided, the QR code to the right or via the online feedback form at:

<https://consultation.stockport.gov.uk/corporate-support-services/marple-community-hub>

Feedback website live: 04.9.23 - 02.10.23



## ANTICIPATED TIMELINE

